

Flauta con pentagrama



Gráficos originales de:



Bordar y Cantar

The image shows a musical manuscript page for flute. It features a grid of 60 columns and 70 rows. The columns are numbered 10, 20, 30, 40, 50, and 60 at the top. The rows are numbered 10, 20, 30, 40, 50, 60, and 70 on the left side. A red pentagram is drawn across the grid, starting from the top-left corner and extending to the right. The grid is composed of blue lines, and the numbers are in red.

60 70 80 90 100 ▼ 110 120

10

20

30

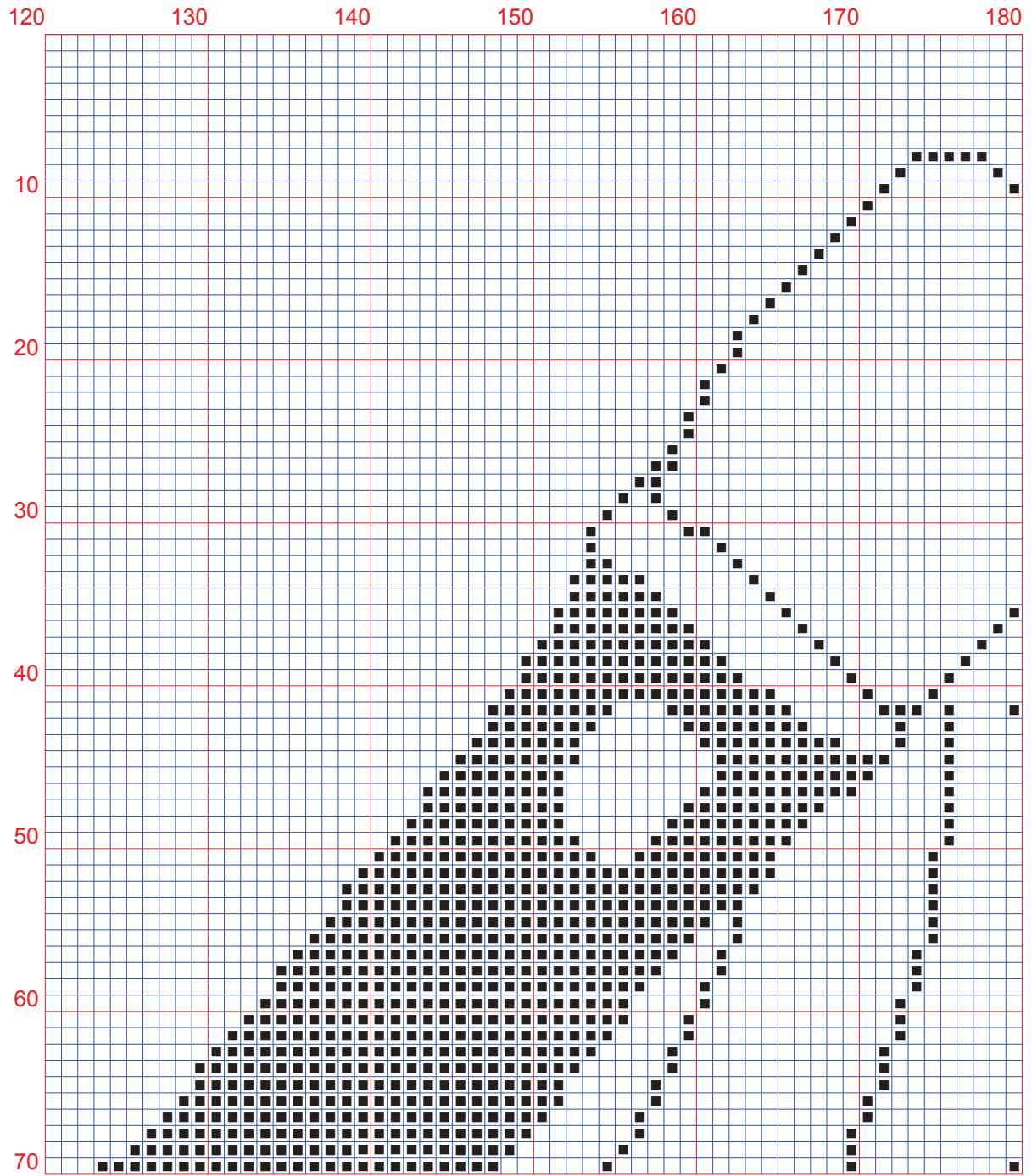
40

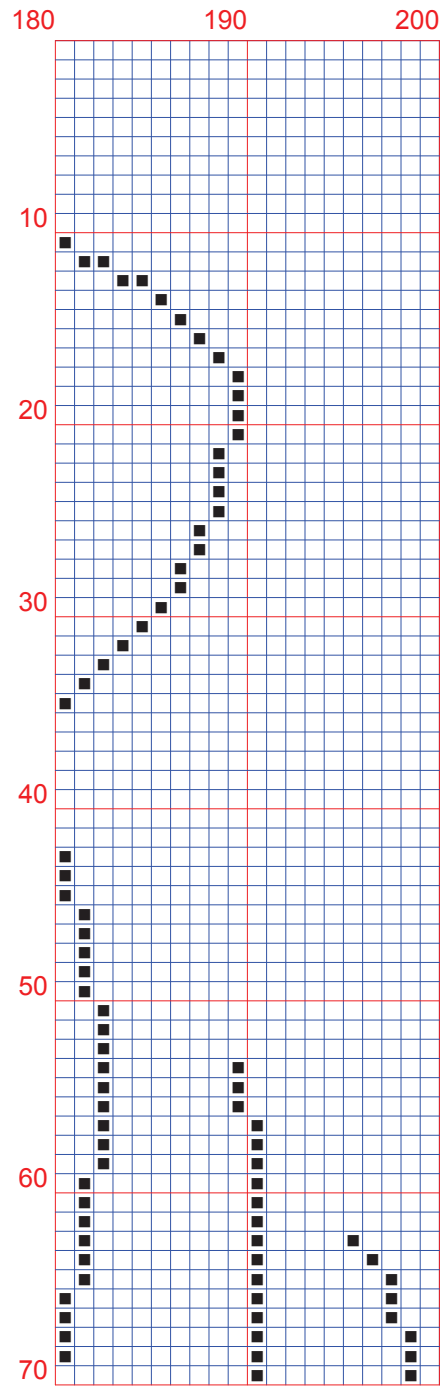
50

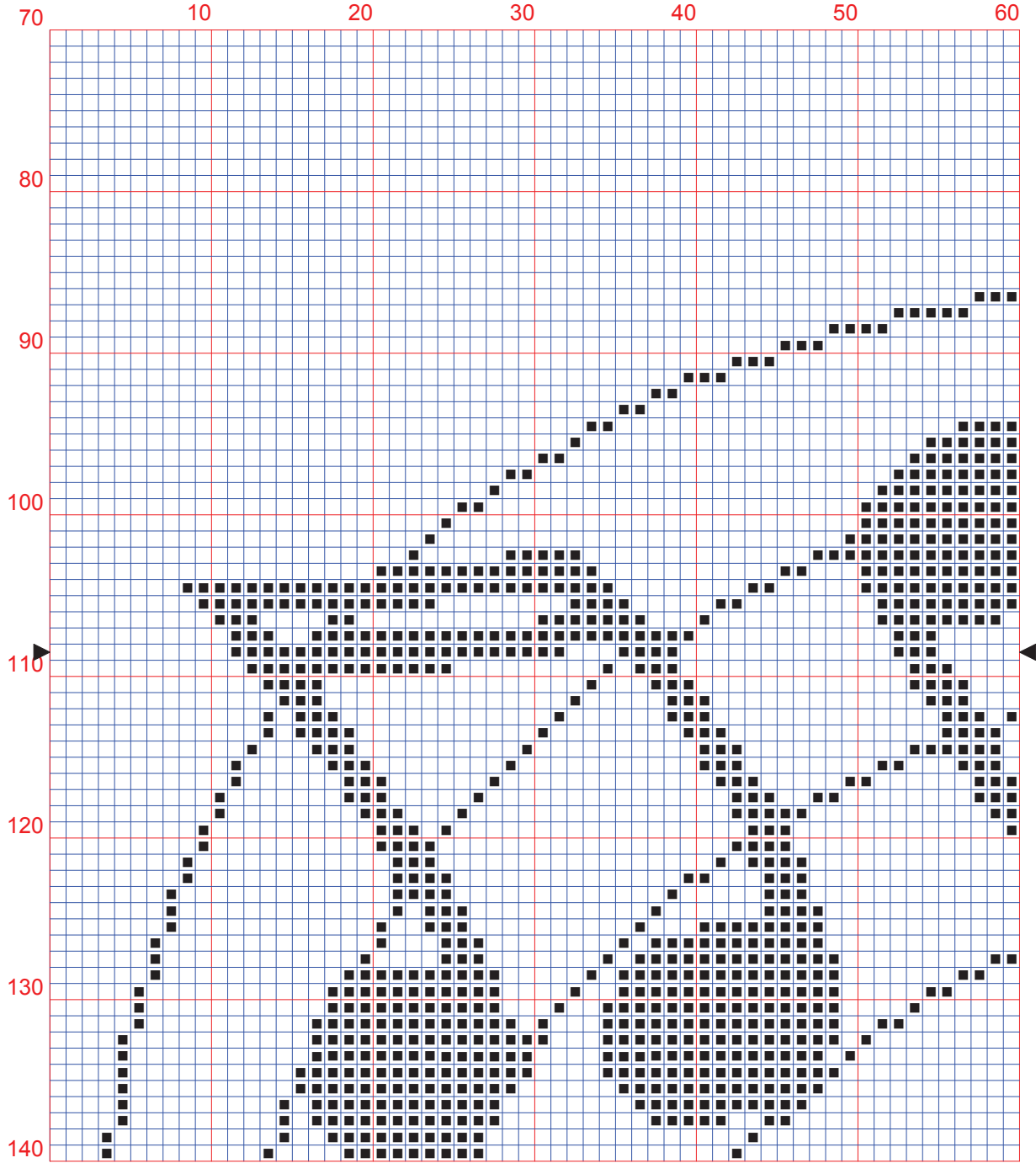
60

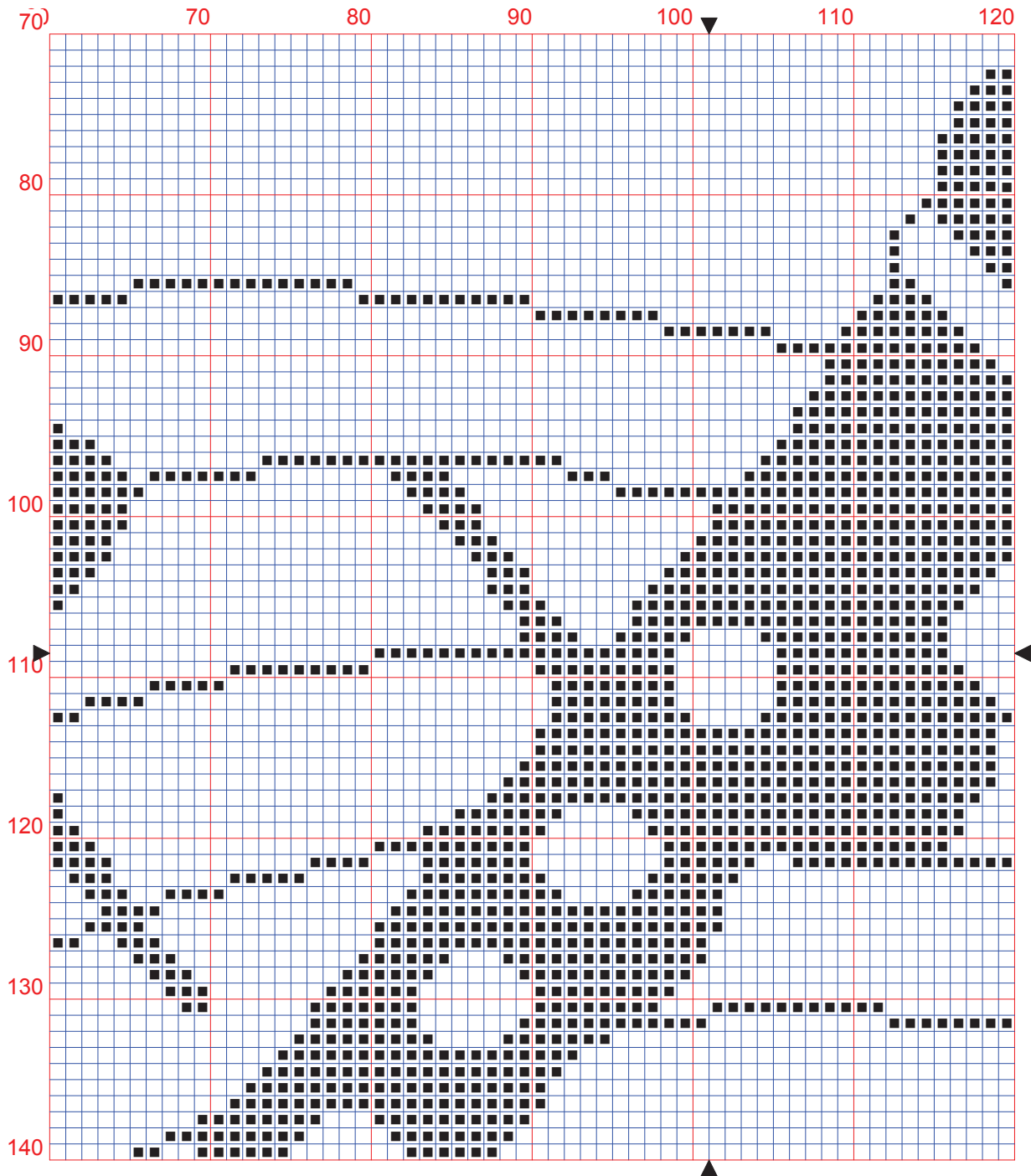
70

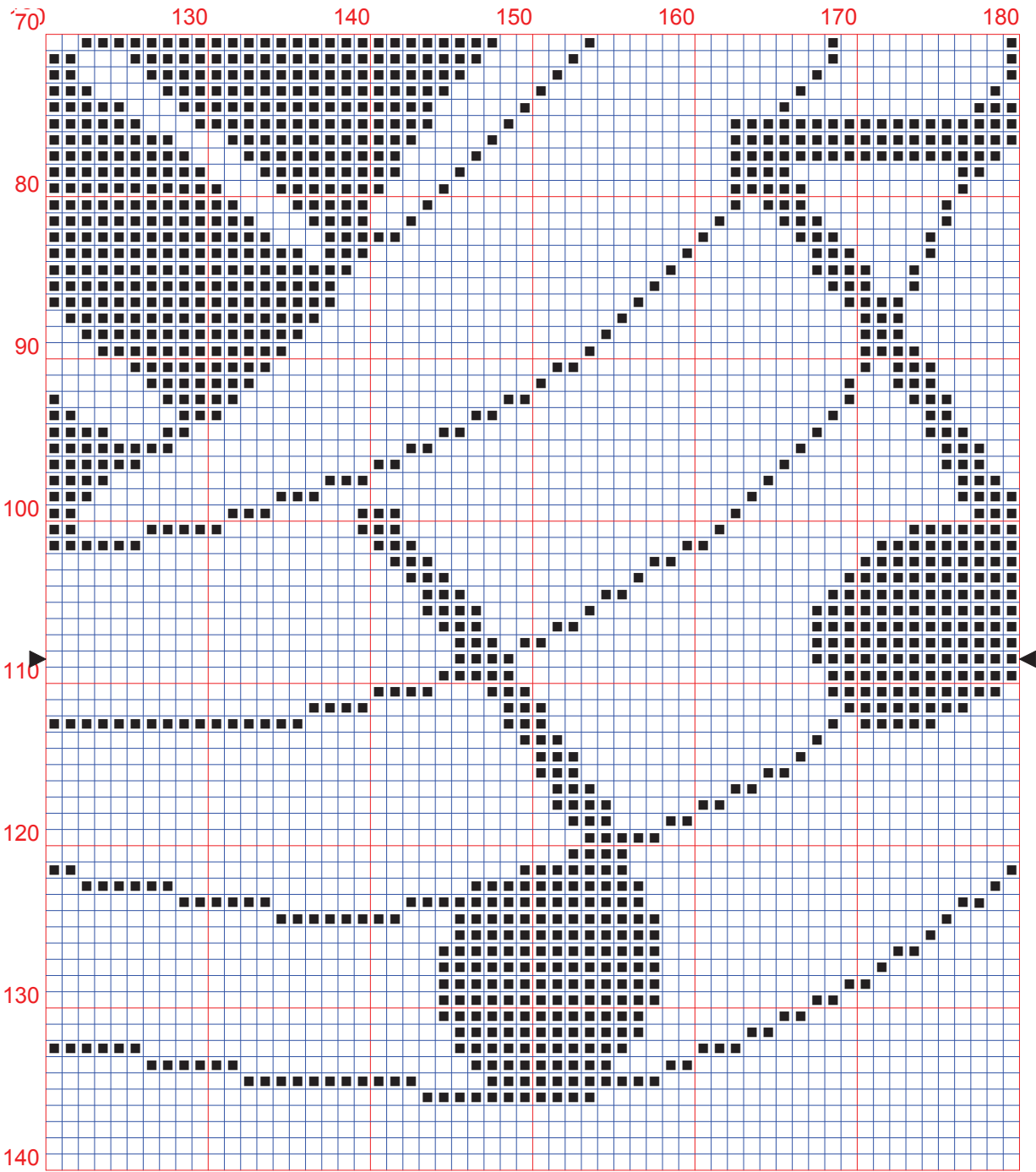
▲

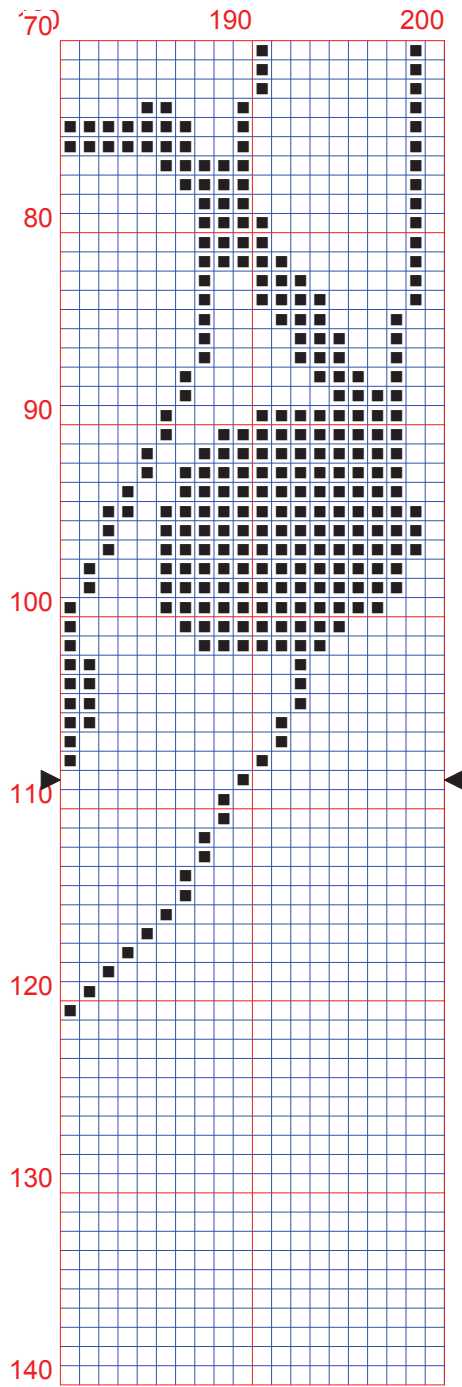


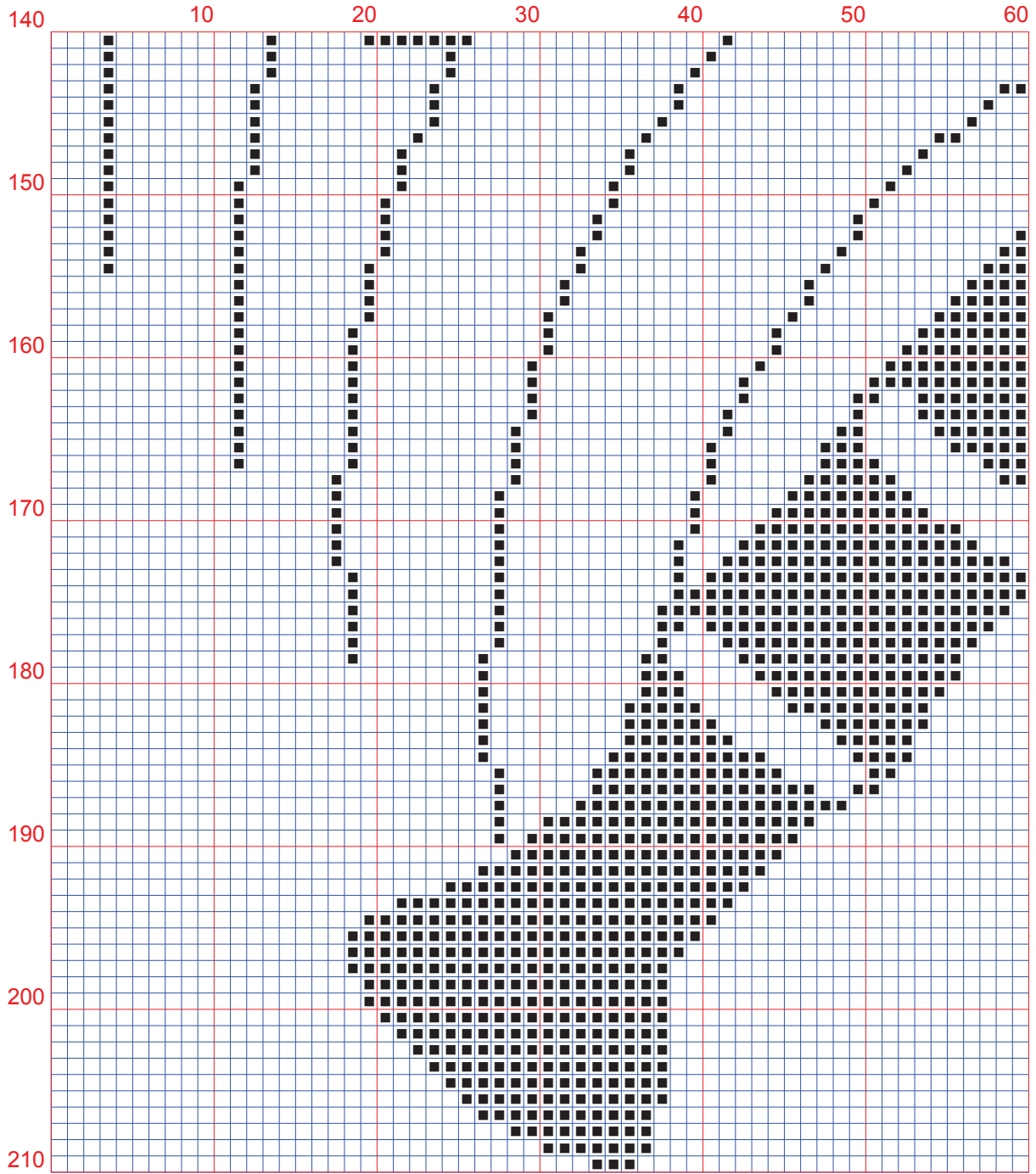












The image shows a musical score for a flute on a grid. The vertical axis is labeled from 140 to 210 in increments of 10, with the numbers increasing downwards. The horizontal axis is labeled from 70 to 120 in increments of 10. A large graphic of a flute is formed by black squares on the grid, positioned between horizontal lines 140 and 175. A downward-pointing triangle is located at the top right of the grid, and an upward-pointing triangle is at the bottom center.

140	130	140	150	160	170	180
150						
160						
170						
180						
190						
200						
210						

140 190 200

150

160

170

180

190

200

210

Instrucciones y Código de colores para el Diseño: "Flauta con pentagrama"

Tela: 14 count White Aida
Puntos: 196 x 203 **Medida:** 14.00 x 14.50 inches or 35.56 x 36.83 cm
Colores: DMC

Use 2 hebras de hilo para el punto de cruz

<u>Sym</u>	<u>No.</u>	<u>Colour Name</u>	<u>Sym</u>	<u>No.</u>	<u>Colour Name</u>
■	310	Black			

© Copyright Bordarycantar.com all rights reserved

<http://www.bordarycantar.com>

Diseñadora: Marisol Martínez

*Las medidas finales pueden variar algo después de cosida la labor, lavada, planchada y almidonada.

**Éste cuadro, al igual que sus patrones, han sido diseñado e impresos con las mejores intenciones de que estén sin errores. Sin embargo, la posibilidad de errores humanos, errores de impresión o la variación de la costura individual existe, y lamentamos no poder hacernos responsables de esto.

***Queda totalmente prohibida la reproducción de estos patrones sin la expresa autorización de su diseñadora.

** Dimensions may vary somewhat late after work sewn, washed, ironed and starched.*

*** This chart, like their employers, have been designed and printed with the best intentions they are without error. However, the possibility of human error, printing errors or changes in individual seam there, and we are unable to vouch for this.*

**** It is strictly forbidden to reproduce these patterns without the express permission of its designer.*

**MADEJAS DE HILOS QUE NECESITAS PARA EL ESQUEMA: Flauta
con pentagrama**

NOMBRE HILO (DMC/Rosace)	CMS PARA 1 MADEJA	MADEJAS ENTERAS	TOTAL MADEJAS
310	1,04	2	2

